

Oracle Database10g R2 (10.2.0.1)
on
SUSE Linux 10.0

Introduction

Arun Singh
Novell Inc.
<http://www.novell.com/oracle>

Novell.

Introduction

This white paper is designed to help you get started with Oracle 10g R2 on SUSE Linux 10.0. This will help you to work with latest SUSE OS and Oracle Database 10g R2. Oracle 10g R2 is supported and certified only on SUSE LINUX Enterprise Server 9 (SLES 9) but occasionally for development and testing purposes you will prefer to have it up and running on your desktop for quick access.

Hardware Requirements

The system must meet the following minimum hardware requirements:

Requirement	Minimum Value
RAM	1024 MB
Swap space	Approx. twice the size of RAM
Disk space in /tmp	400 MB
Disk space for software files	3.5 GB
Disk space for database files	1.2 GB

Required Software

You need SUSE Linux 10.0 and Oracle 10g R2. Also, optional orarun package will help you to make Oracle pre-Install task simple.

Novell/SUSE

1. Novell SUSE Linux 10.0 (SUSE OSS version: <http://www.opensuse.org>)
2. orarun : Get latest version from (<http://ftp.novell.com/partners/oracle/sles-9/>)
3. Novell/SUSE Documents are available here:
<http://www.novell.com/documentation/>
4. For more "Oracle on SUSE" related information visit
<http://www.novell.com/oracle> .

Oracle

Oracle database 10g R2 Software is available for download from OTN.
File name: 10201_database_linux32.zip

1. URL to download SW:
<http://www.oracle.com/technology/software/products/database/oracle10g/htdocs/10201linuxsoft.html>.
2. Oracle Documents are available on :
<http://www.oracle.com/technology/documentation/database10gr2.html>
3. Oracle Development Tools : <http://www.oracle.com/tools/index.html>

Installation Steps

1. Install SUSE Linux Operating System

Follow the Installation instructions provided in the SUSE LINUX 10.0 installation manual. We will focus on Oracle related component and make sure you meet Oracle software space requirement.

SUSE Linux 10.0 with default packages along with “C/C++ Compiler and Tools” is sufficient for Oracle 10g R2 install. Here is snap-shot:

Selection
<input checked="" type="checkbox"/> Graphical Base System
<input checked="" type="checkbox"/> KDE Desktop Environment
<input type="checkbox"/> All of KDE
<input type="checkbox"/> GNOME System
<input checked="" type="checkbox"/> Help and Support Documentation
<input type="checkbox"/> Office Applications
<input type="checkbox"/> Games
<input type="checkbox"/> Multimedia
<input type="checkbox"/> Voice over IP
<input type="checkbox"/> XEN Virtualization
<input type="checkbox"/> Simple Web Server with Apache2
<input type="checkbox"/> LDAP Server and Tools
<input type="checkbox"/> Network and Server
<input type="checkbox"/> Laptop
<input type="checkbox"/> Mobile Computing
<input checked="" type="checkbox"/> C/C++ Compiler and Tools
<input type="checkbox"/> Kernel Development
<input type="checkbox"/> KDE Development
<input type="checkbox"/> GNOME Development
<input type="checkbox"/> Tcl/Tk Development System
<input type="checkbox"/> Java
<input type="checkbox"/> Experienced User
<input type="checkbox"/> LaTeX, SGML, and XML
<input type="checkbox"/> Fonts
<input type="checkbox"/> Mono/CLR

Check whether C/C++ compiler is installed. “gcc --version” will show “gcc (GCC) 4.0.2 (SUSE Linux)”. If gcc is not installed, then use YaST setup tool to install “**C/C++ Compiler and Tools**”.

```
s110:/ # gcc --version
gcc (GCC) 4.0.2 20050901 (prerelease) (SUSE Linux)
Copyright (C) 2005 Free Software Foundation, Inc.
This is free software; see the source for copying conditions. There is NO
warranty; not even for MERCHANTABILITY or FITNESS FOR A PARTICULAR PURPOSE.
s110:/ # █
```

2. Oracle Install prerequisites

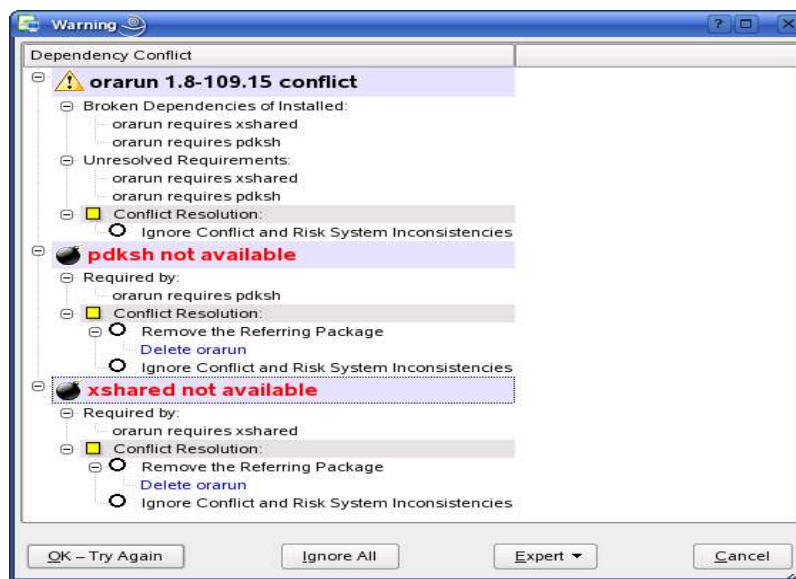
Refer to Oracle installation document for complete list of prerequisites. Novell/SUSE provides orarun packages to automate most of the Oracle pre-install task. orarun package is not included in SUSE LINUX 10.0 as this is for SUSE LINUX Enterprise Server.

orarun :

1. Install orarun package. It will ask to install dependent packages first.

```
# rpm -ivh --nodeps orarun-1.8-109.15.i586.rpm
```

2. Install libaio and libaio-devel from SUSE LINUX 10.0 media.
3. You might see xshared and pdksh not available conflict next time you use YaST. Ignore this as this is cosmetic error. Here is snap-shot:



4. Now orarun package is installed. Please enable newly created "oracle" user for Oracle 10g installation.

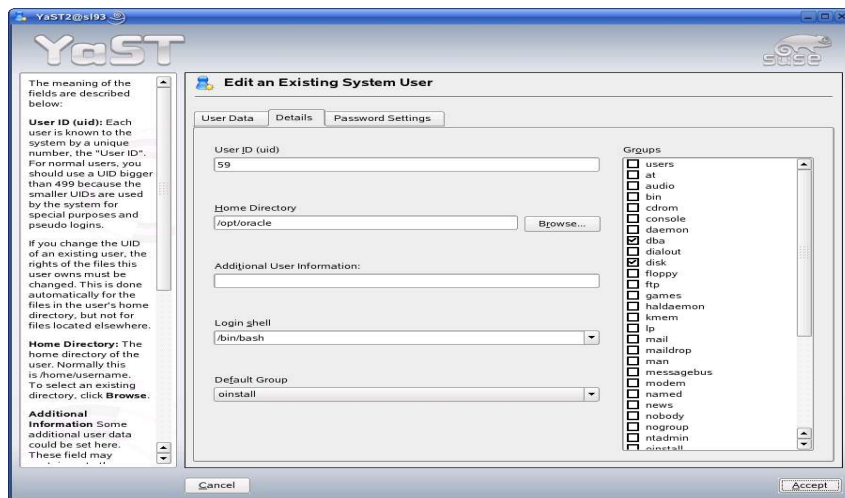
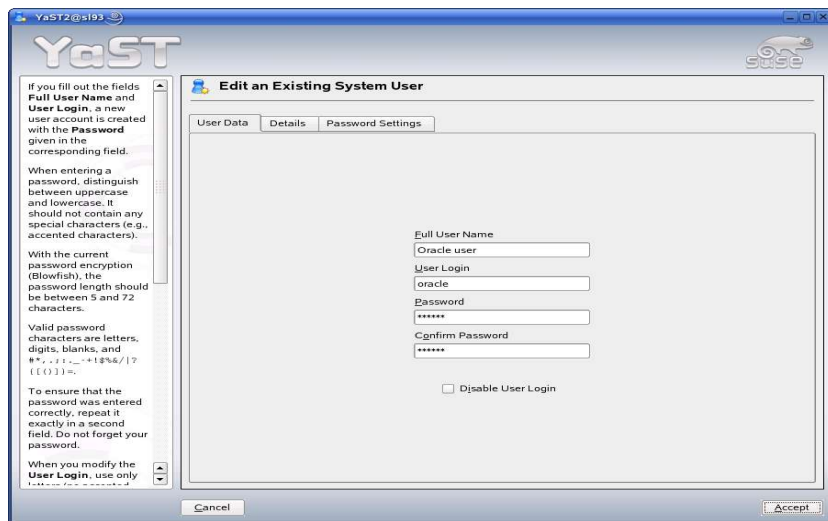
1. The account for oracle user is disabled. Enable it, by changing the shell for the "oracle" user from "/bin/false" to "/bin/bash", either by using YaST setup tool or by editing the "/etc/passwd" file.

2. Set a new password for user "oracle" i.e. "/usr/bin/passwd oracle".

You can use SUSE setup tool YaST to accomplish above tasks.

/sbin/yast2 -> "security and Users" -> "Edit and create groups"
(Select users tab and set "System Users" filter to see oracle user.)

Following are the screen shots of "oracle" user properties:



5. Now set your Oracle environment variables.

1. Change Oracle home directory by editing ORACLE_HOME variable in “/etc/profile.d/oracle.sh” file.
ORACLE_HOME=\$ORACLE_BASE/product/10gR2
2. Default ORACLE_SID set by orarun install is “mydb”. Change it to your preferred name in “/etc/profile.d/oracle.sh” file.

Note: Oracle Installer will ask this database name and it should match to ORACLE_SID to avoid any problem.

6. Run “/usr/sbin/rcoracle start “ to set kernel parameters. Ignore ORACLE_HOME not set message as this will get fixed once Oracle 10g is installed.
7. Exit from current root user session and login as new “oracle” user. Following is snap-shot verifying current user.

```
oracle@sl10:~> id
uid=59(oracle) gid=54(oinstall) groups=6(disk),54(oinstall),55(dba)
oracle@sl10:~> █
```

3. Oracle 10g R2 (10.2.0.1) Installation

1. Make sure you are logged in as “oracle” user.

Get Oracle 10g R2 (10.2.0.1) Software from oracle OTN web.

1. #unzip 10201_database_linux32.zip
2. modify “database/install/oraparam.ini” file to add support for SUSE Linux 10.0. After modifying oraparam.ini file “[Certified Versions]” line will look like:

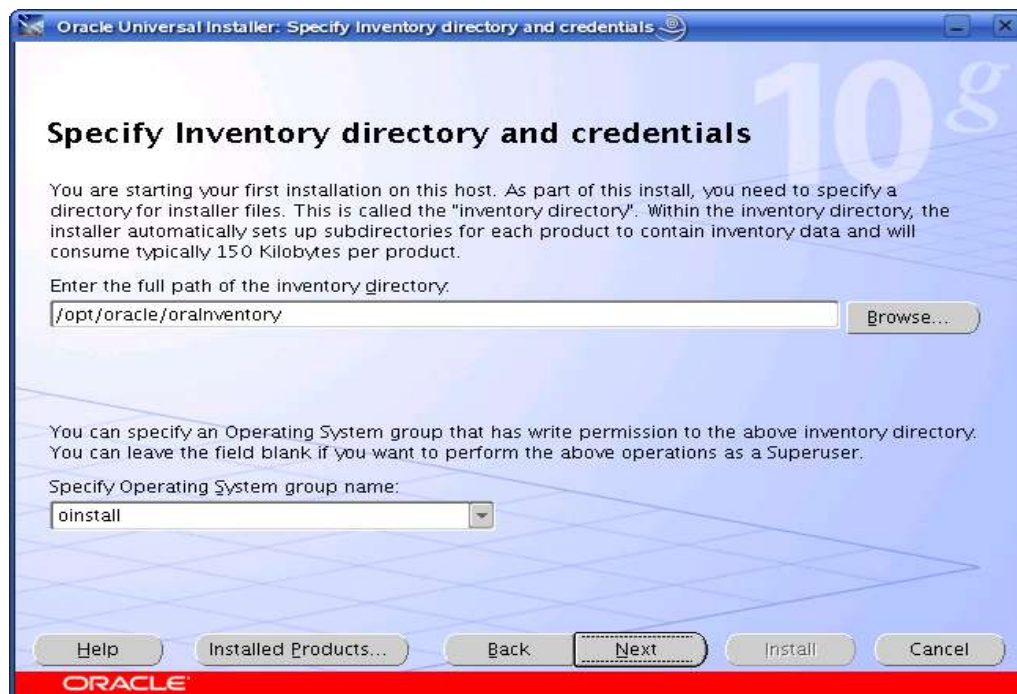
```
[Certified Versions]
Linux=redhat-3,SuSE-9,SuSE-10,redhat-4,UnitedLinux-1.0,asianux-1,asianux-2
```

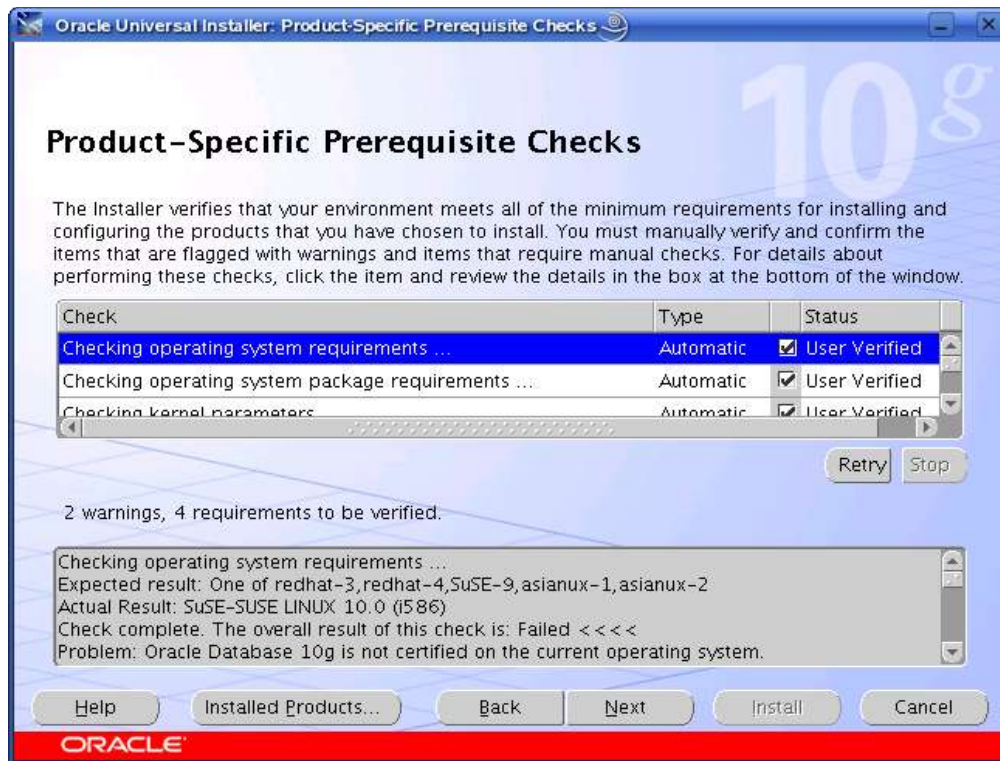
3. You can avoid step #2 by passing “-ignoresysprereqs” to runInstaller.
4. Run Oracle Universal installer : ./runInstaller

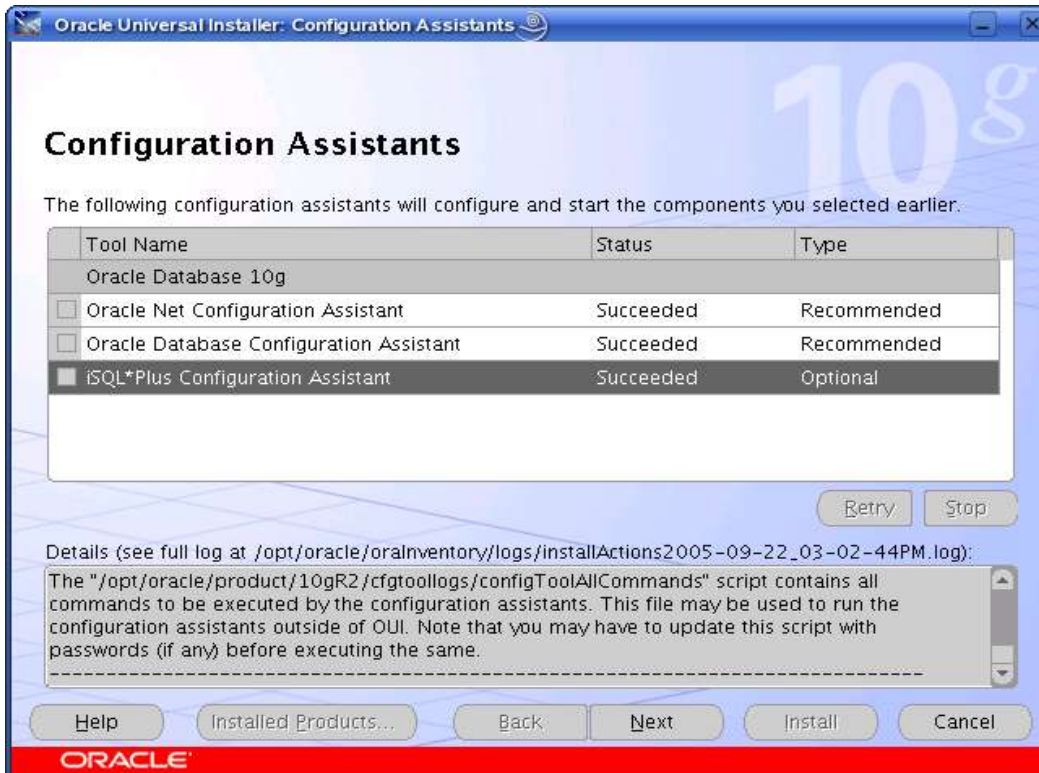
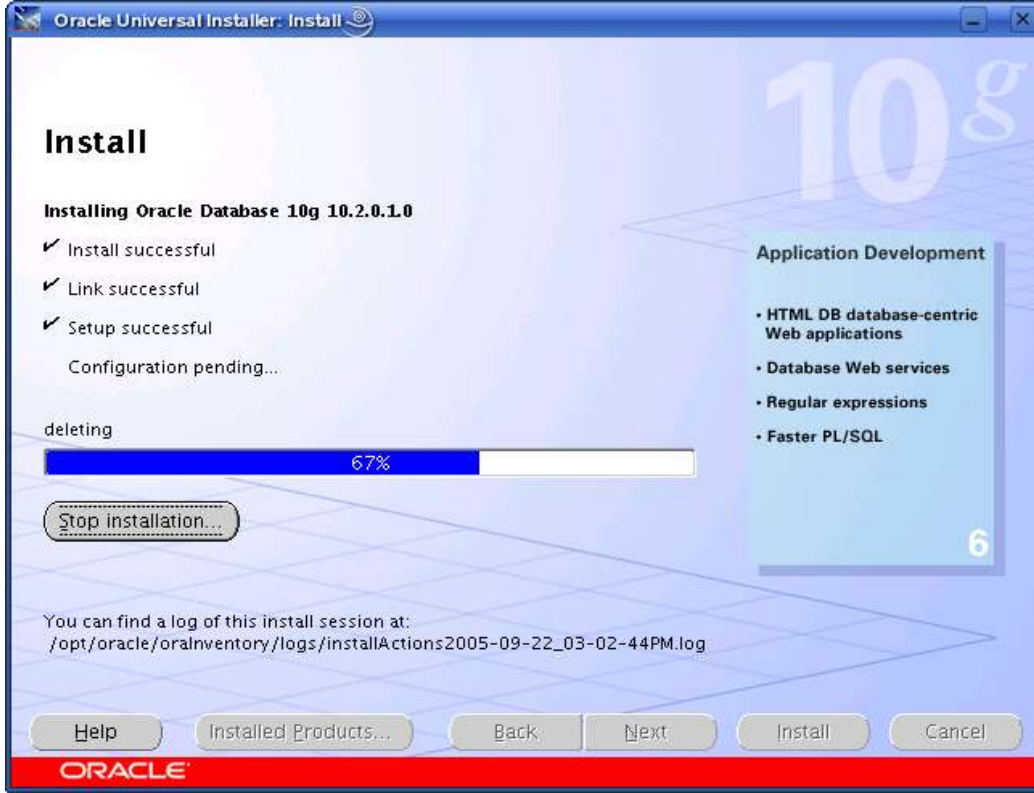
If you are installing from CD mounted as /media/cdrom then “cd /tmp && /media/cdrom/database/runInstaller” will be helpful.

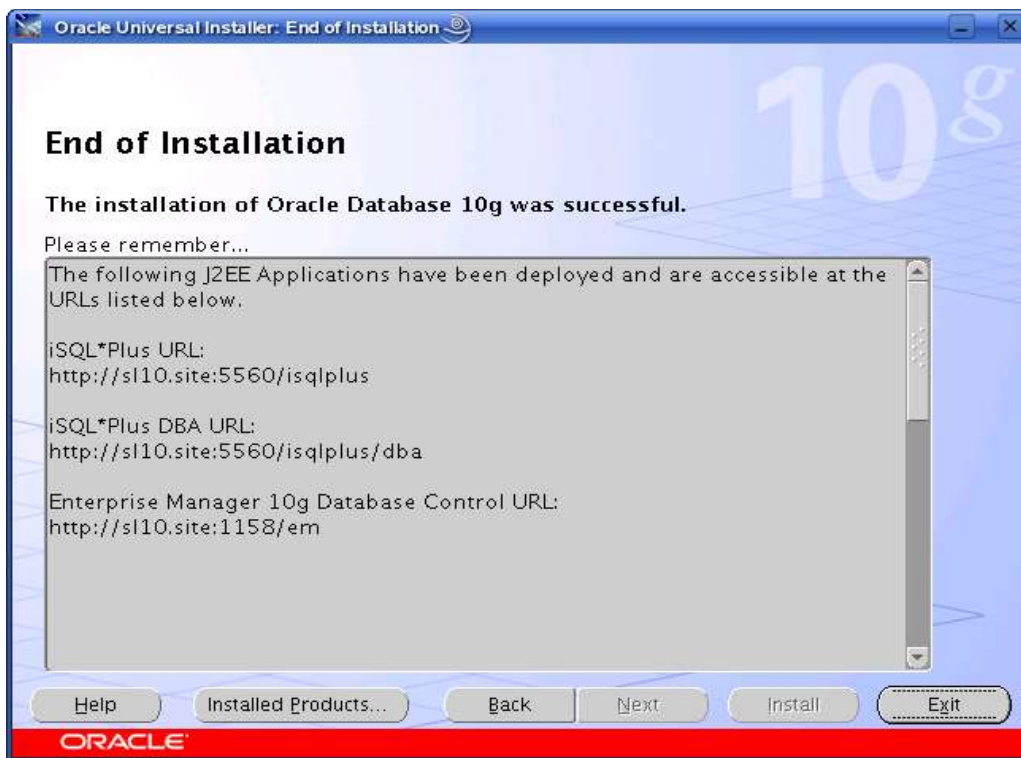
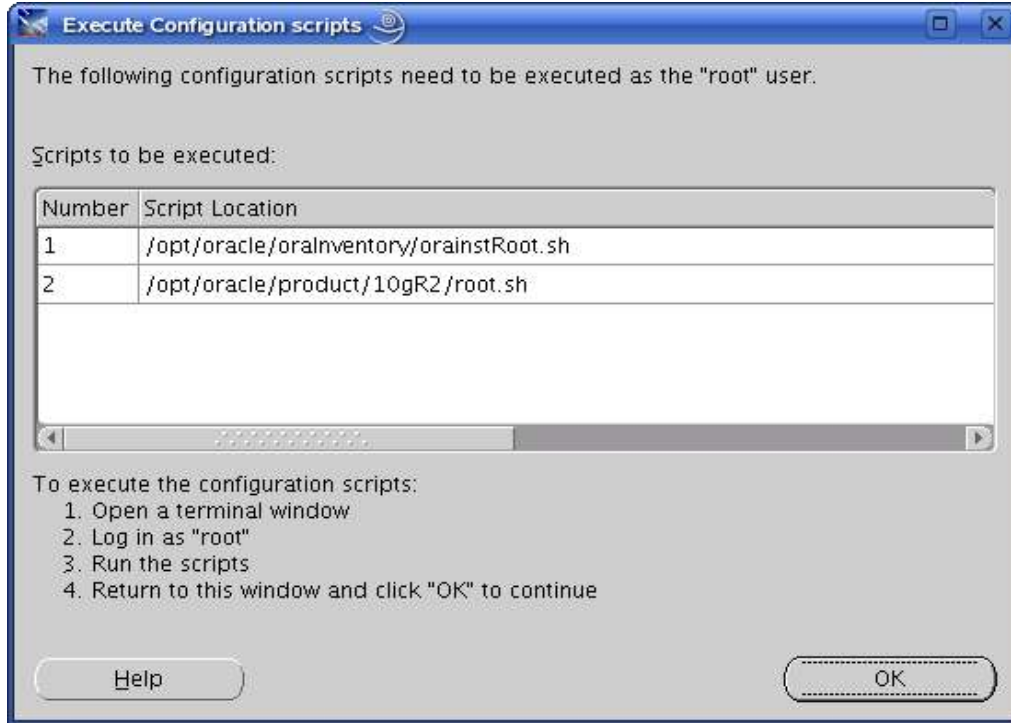
Note: Installer will not detect SUSE Linux 10.0. Do manual check in “Product-Specific Prerequisites Checks” for OS.

5. Installation will walk you through with self explanatory instructions. Here are screen-shots from simple Oracle 10g Installation:



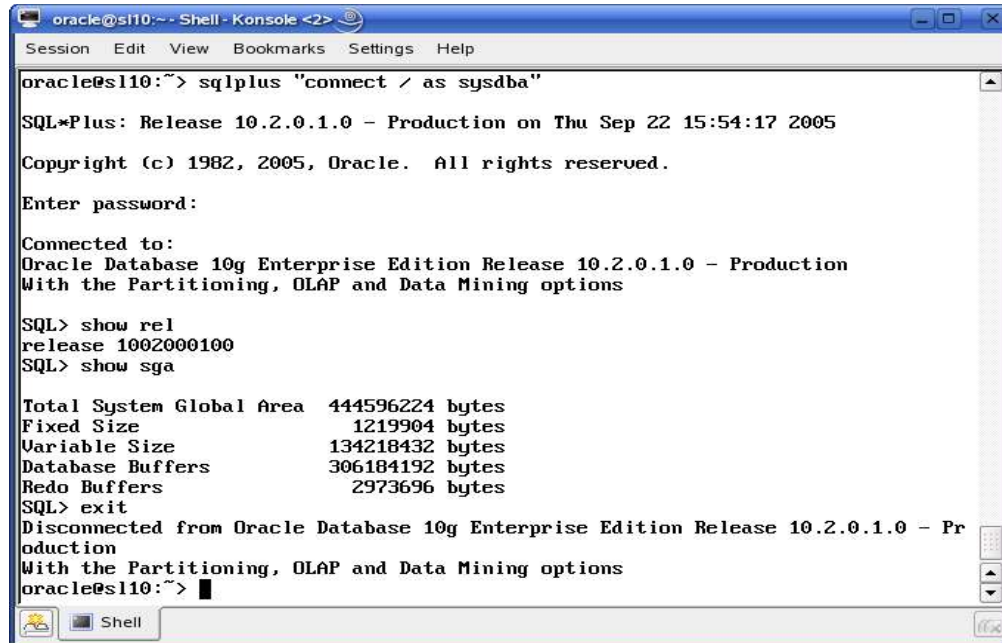






4. **sqlplus**: Startup and Shutdown of the Oracle10g Database (Manual)

From diagnostic point of view it is very important to check sqlplus is functioning properly. If not then your installation is having problems.



```
oracle@sl10:~ - Shell - Konsole <2>
Session Edit View Bookmarks Settings Help
oracle@sl10:~> sqlplus "connect / as sysdba"
SQL*Plus: Release 10.2.0.1.0 - Production on Thu Sep 22 15:54:17 2005
Copyright (c) 1982, 2005, Oracle. All rights reserved.
Enter password:
Connected to:
Oracle Database 10g Enterprise Edition Release 10.2.0.1.0 - Production
With the Partitioning, OLAP and Data Mining options
SQL> show rel
release 1002000100
SQL> show sga
Total System Global Area 444596224 bytes
Fixed Size 1219904 bytes
Variable Size 134218432 bytes
Database Buffers 306184192 bytes
Redo Buffers 2973696 bytes
SQL> exit
Disconnected from Oracle Database 10g Enterprise Edition Release 10.2.0.1.0 - Pr
oduction
With the Partitioning, OLAP and Data Mining options
oracle@sl10:~> █
```

1. To startup the database:
sl10\$ sqlplus /nolog
SQL> connect / as sysdba
SQL> startup
2. To shutdown the database:
sl10\$ sqlplus /nolog
SQL> connect / as sysdba
SQL> shutdown

Note: "/" connects you to the schema owned by SYS with the privilege SYSDBA.

5. Un-Installing incomplete Installation : **Clean-up**

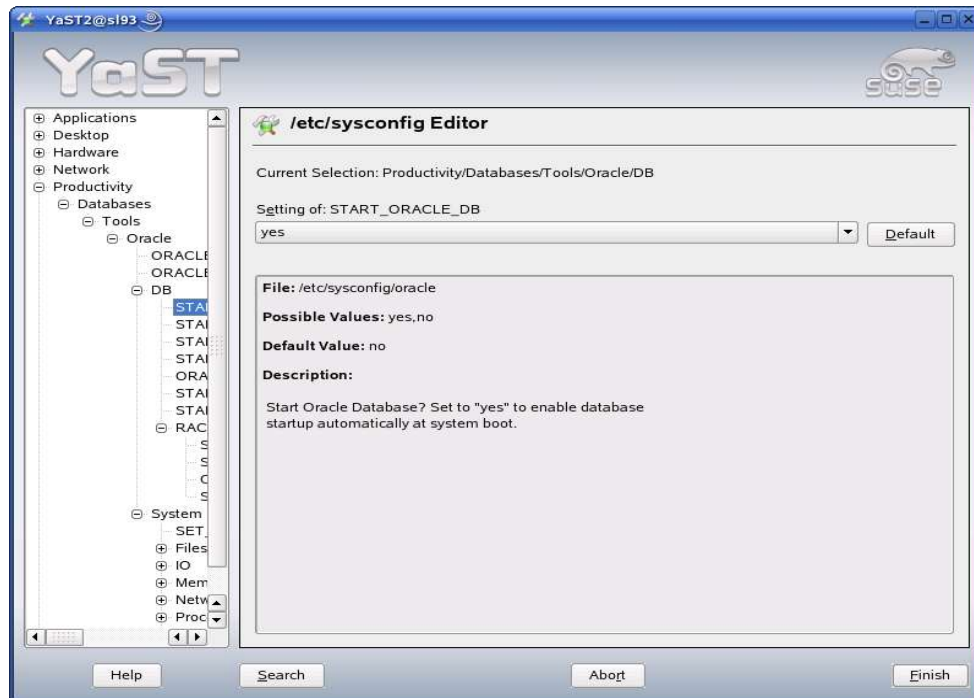
Oracle Installer will give you an option to remove installed product but sometimes your installation is not complete and you would like to restart the clean installation. Here are some quick and dirty steps to clean-up your system:

1. Remove /usr/local/bin/{coraenv, dbhome, oraenv}
2. Remove /etc/oratab, /etc/orainst.loc, and /etc/oracle directory
3. Remove all files created by Oracle installer in /opt/oracle (Install Directory) i.e. Directory /opt/oracle/{product, admin, oradata, oraInventory}

6. Oracle Database Start at boot time

1. Set parameter START_ORACLE_DB="yes" in "/etc/sysconfig/oracle" file.
Edit "/etc/sysconfig/oracle" manually or use YaST :

"/sbin/yast2->System->/etc/sysconfig Editor ->Productivity->Databases"



2. Edit /etc/oratab entry corresponding to your database to "Y".
i.e. mydb:/opt/oracle/product/10gR2:Y

7. Oracle Enterprise Manager

1. Start Oracle listener, If it is not already started by "lsnrctl start".
2. If Enterprise manager services is not started, then start it manually by entering following command "emctl start dbconsole".
3. Enterprise Manager web interface (<http://localhost:1158/em>) to perform routine database administration and tuning tasks.

Oracle Enterprise Manager (SYS) - Database Instance: orcl - Mozilla Firefox

File Edit View Go Bookmarks Tools Help

http://sl10.site.1158/em/console/database/instance/sitemap?event=doLoad&target=orcl&type=oracle_datat

SUSE LINUX Entertainment News Internet Search Reference Maps and Directions Shopping People and Compani...

ORACLE Enterprise Manager 10g Database Control

Setup Preferences Help Logout

Database

Logged in As SYS

Database Instance: orcl

Home Performance Administration Maintenance

Page Refreshed Sep 22, 2005 3:43:01 PM Refresh View Data Automatically (60 sec)

General **Host CPU** **Active Sessions** **SQL Response Time**

↑ Shutdown

Status Up
Up Since Sep 22, 2005 3:28:20 PM MDT
Instance Name orcl
Version 10.2.0.1.0
Host sl10.site
Listener LISTENER_sl10.site

View All Properties

Load 1.50 Paging 0.00 Maximum CPU 1

Baseline is not available. Reset Baseline

Diagnostic Summary **Space Summary** **High Availability**

ADDM Findings No ADDM run available
All Policy Violations 0
Alert Log No ORA- errors

Database Size (GB) Unavailable
Problem Tablespaces 0
Segment Advisor Details
Recommendations
Space Violations 0
Dump Area Used (%) Unavailable

Instance Recovery Time (sec) 8
Last Backup n/a
Usable Flash Recovery Area (%) 100
Flashback Logging Disabled

Alerts

Category All Go Critical 0 Warning 0

Severity	Category	Name	Message	Alert Triggered
(No alerts)				

Related Alerts

Job Activity

Jobs scheduled to start no more than 7 days ago

Scheduled Executions 0 Running Executions 0 Suspended Executions 0 Problem Executions 0

Done

Enjoy!