

# Oracle Database 18c (18.0.0.0.0) on SUSE Linux Enterprise Server 15

**Arun Singh**  
August 9<sup>th</sup>, 2018



## Introduction

This document is not a replacement for official Oracle install document, but to help you understand minor difference you may encounter while installing Oracle Database 18c on SUSE Linux Enterprise Server 15. This document covers x86\_64 version but installation steps are same for other platforms. We will use latest versions of Oracle Database Enterprise version 18c.

## Oracle Database Software

Oracle Database Enterprise Edition 18c is available for public download at: <https://www.oracle.com/technetwork/database/enterprise-edition/downloads/index.html>

## SUSE Linux Software

SUSE Linux Enterprise Server 15: <https://www.suse.com/products/server/download/>

## Installation

Install SUSE Linux Enterprise Server 15 with “**Enhanced Base System, Software Management, X Window System, Oracle Server Base**” pattern. Please note that SLES15 comes with SLE-15-Installer-DVD and SLE-15-Packages DVD. You can follow official Oracle Installation manual for selective required rpms, however **Oracle Server Base** pattern from SUSE will fulfil minimum setup required for Oracle Database Installation.



```
oracle@sles15:~  
File Edit View Search Terminal Help  
oracle@sles15:~> uname -a  
Linux sles15 4.12.14-23-default #1 SMP Tue May 29 21:04:44 UTC 2018 (cd0437b) x86_64 x86_64 x86_64 GNU/Linux  
oracle@sles15:~> cat /etc/os-release  
NAME="SLES"  
VERSION="15"  
VERSION_ID="15"  
PRETTY_NAME="SUSE Linux Enterprise Server 15"  
ID="sles"  
ID_LIKE="suse"  
ANSI_COLOR="0;32"  
CPE_NAME="cpe:/o:suse:sles:15"  
oracle@sles15:~> env |grep ORA  
ORACLE_SID=orcl  
ORACLE_BASE=/opt/oracle  
ORACLE_HOME=/opt/oracle/product/18c/db  
oracle@sles15:~>
```

## Installing Oracle Database 18c

Installing Oracle Database 18c on SLES15 is easy, please follow:

1. Download Oracle SW (LINUX.X64\_180000\_db\_home.zip)
  - a. unzip in \$ORACLE\_HOME directory.
  - b. cd \$ORACLE\_HOME
  - c. ./runInstaller

**Note:** There is a change in Oracle Database 18c Installation process. Now runInstaller is a script, please check Oracle Official document for explanation.

2. Watch for following minor error/warning messages (**Fix before starting Installer**):
  1. Make sure Server is assigned static IP address.
  2. Make sure you have enabled oracle user & logged-in as oracle
  3. Prerequisite Checks – Edit “**cv/admin/cvu\_config**” file & execute runInstaller again

i.e. add CV\_ASSUME\_DISTID=SUSE12



4. Install any missing packages:  
**zypper** in libcap1 libcap1-32bit libcap-ng-utils libcap-ng0-32bit libXtst6-32bit nfs-kernel-server
5. **DBCA Error:** ORA-27104: system-defined limits for shared memory was misconfigured

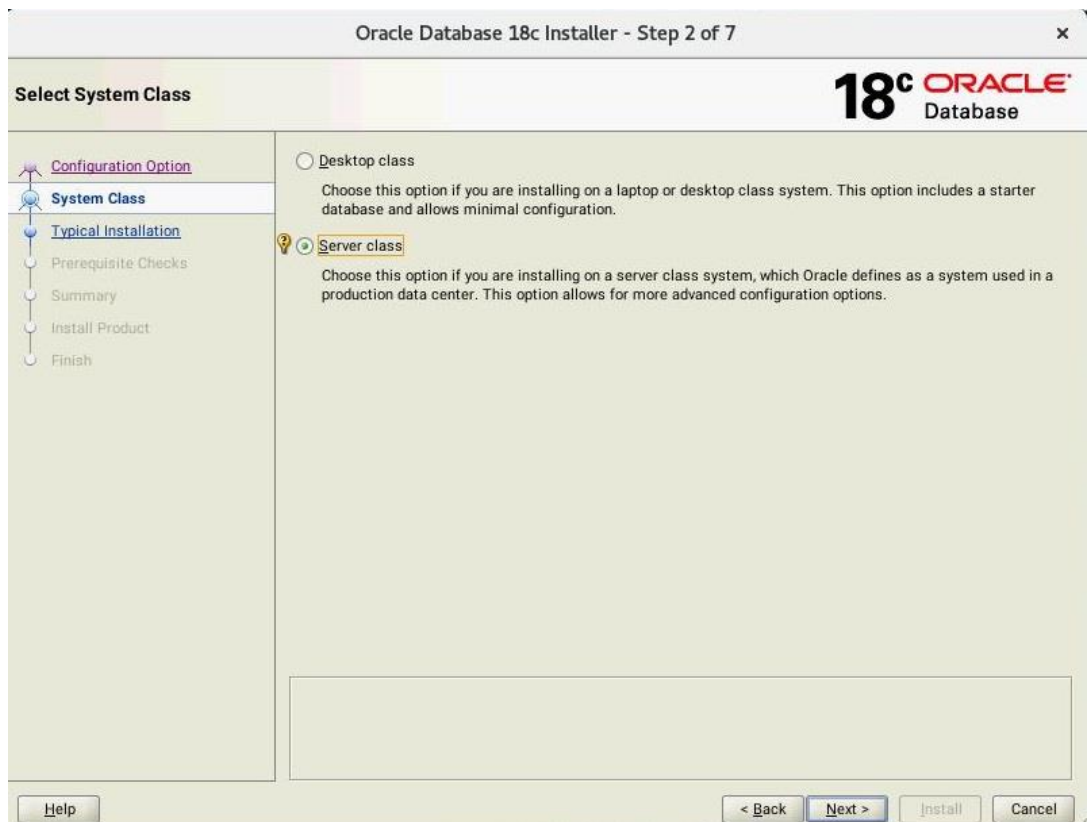
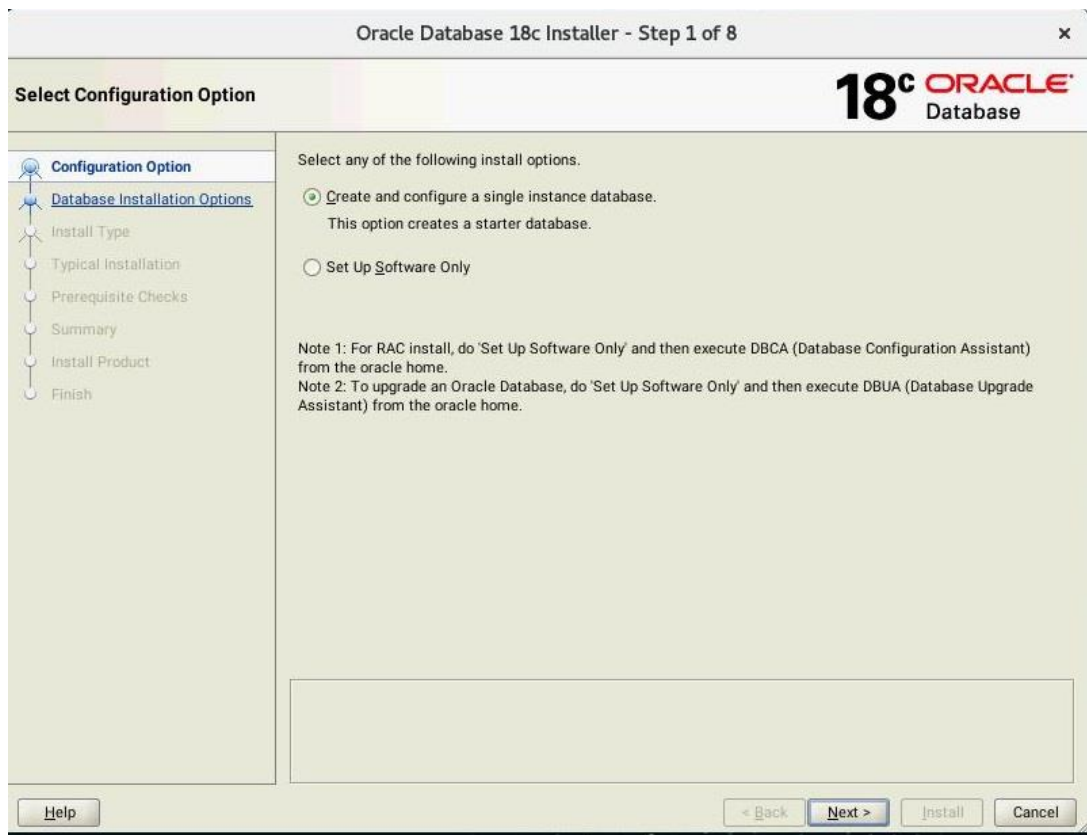
**Fix:** Increase kernel.shmmax & kernel.shmall based on your Server RAM in /etc/sysconfig/oracle & run “**systemctl restart oracle-setup**”.

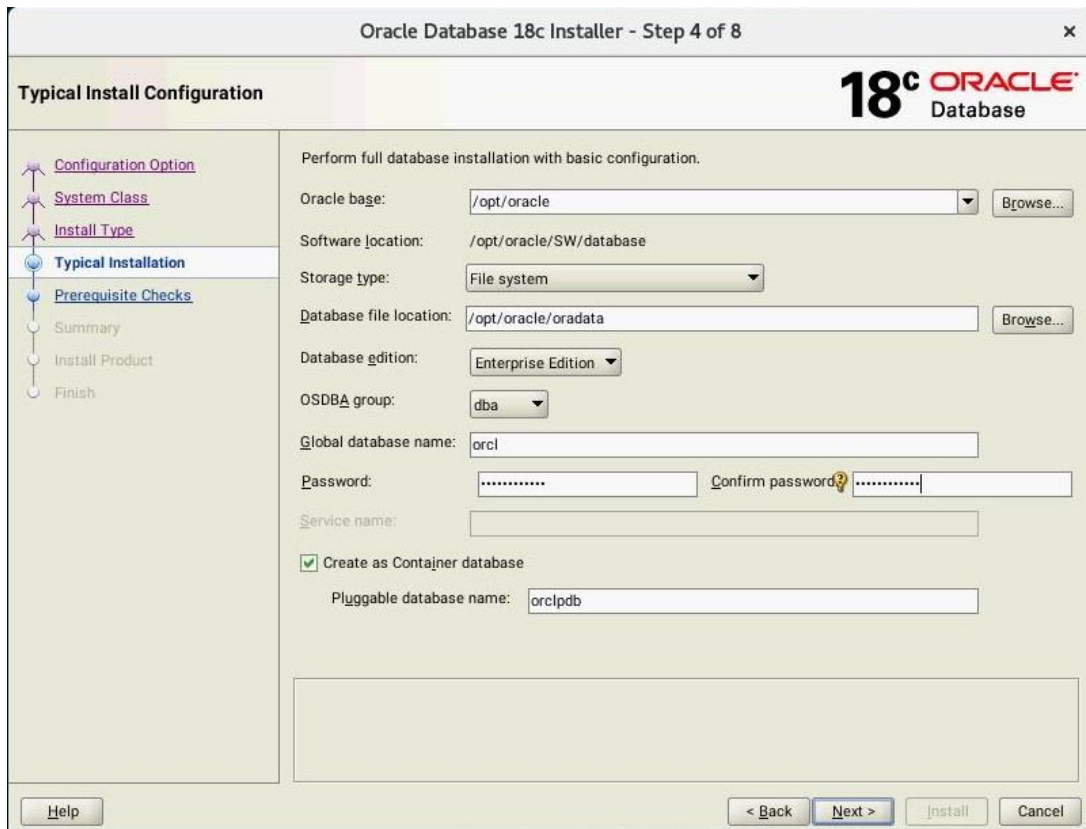
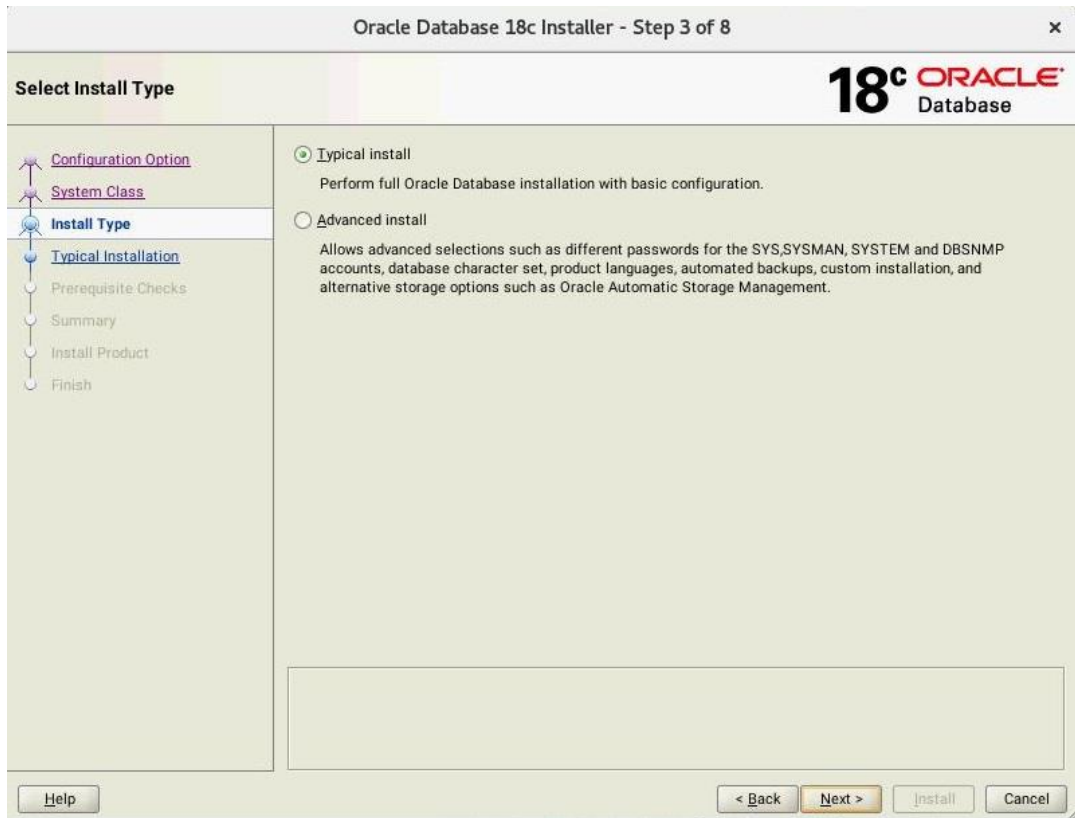
Please refer Oracle Metalink Note [ID 567506.1] - Maximum SHMMAX values for Linux x86 and x86-64

Example values for x86\_64 Server with 32GB RAM:

shmmax=16833714176, shmall=3287834

3. Start Oracle Universal Installer (OUI): \$ORACLE\_HOME/runInstaller





### Oracle Database 18c Installer - Step 5 of 9

#### Create Inventory

- [Configuration Option](#)
- [System Class](#)
- [Install Type](#)
- [Typical Installation](#)
- [Create Inventory](#)
- [Prerequisite Checks](#)
- [Summary](#)
- [Install Product](#)
- [Finish](#)

You are starting your first installation on this host. Specify a directory for installation metadata files (for example, install log files). This directory is called the "inventory directory". The installer automatically sets up subdirectories for each product to contain inventory data. The subdirectory for each product typically requires 150 kilobytes of disk space.

Inventory Directory:

Specify an operating system group whose members have write permission to the inventory directory (orainventory).

orainventory Group Name:

### Oracle Database 18c Installer - Step 6 of 9

#### Perform Prerequisite Checks

- [Configuration Option](#)
- [System Class](#)
- [Install Type](#)
- [Typical Installation](#)
- [Create Inventory](#)
- [Prerequisite Checks](#)
- [Summary](#)
- [Install Product](#)
- [Finish](#)

**Verification Result**

Some of the minimum requirements for installation are not completed. Review and fix the issues listed in the following table, and recheck the system.

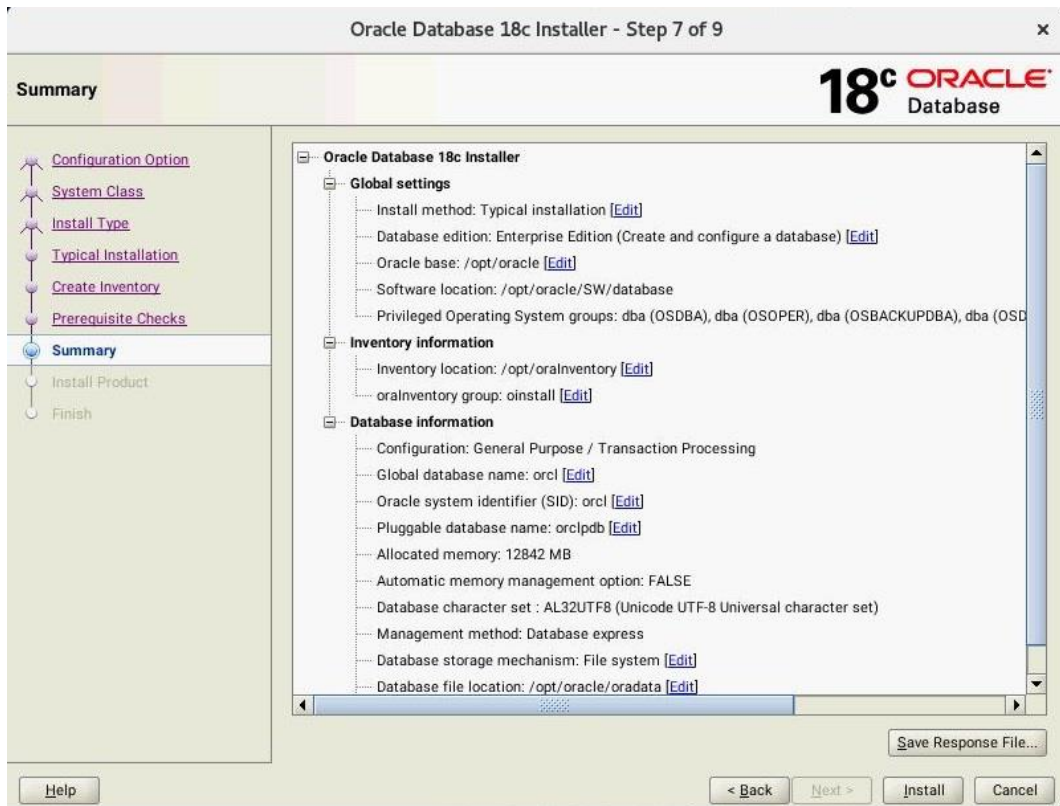
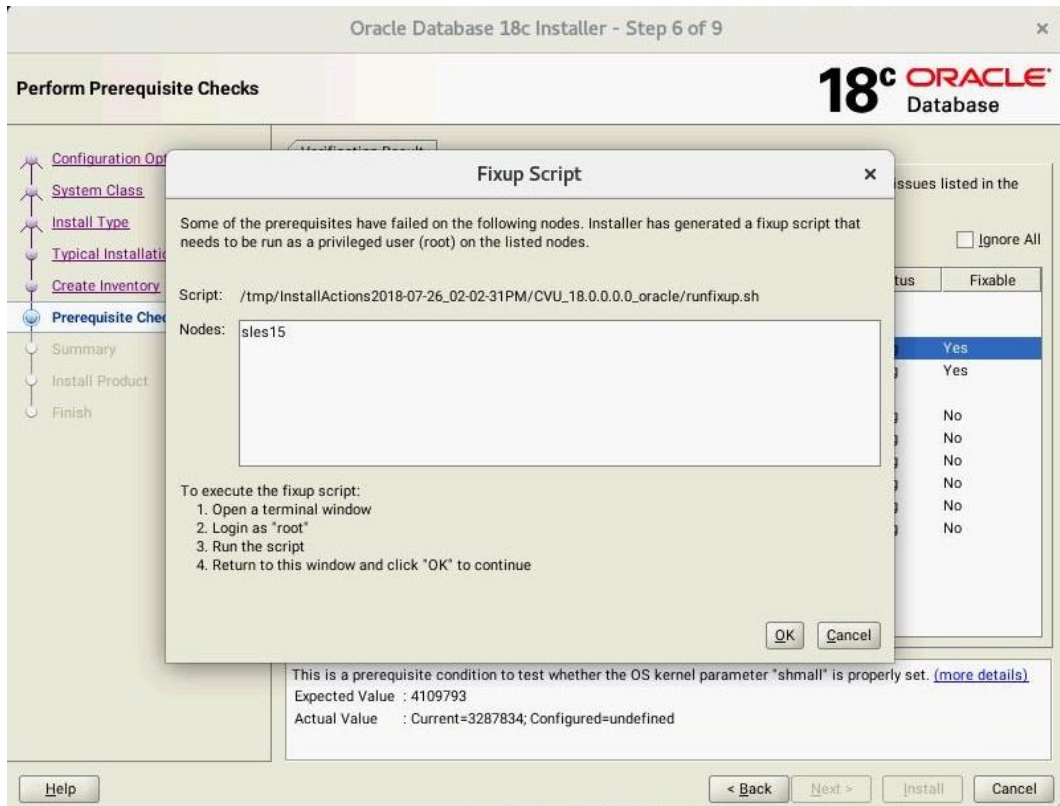
Checks	Status	Fixable
[OS Kernel Parameters]		
OS Kernel Parameter: shmall	Warning	Yes
OS Kernel Parameter: panic_on_oops	Warning	Yes
[Packages]		
Package: libcap-ng-utils-0.7.3-4.125 (x86_64)	Warning	No
Package: libcap-ng0-32bit-0.7.3-4.125 (x86_64)	Warning	No
Package: libcap1-1.10-59.61 (x86_64)	Warning	No
Package: libcap1-32bit-1.10-59.61 (x86_64)	Warning	No
Package: libXtst6-32bit-1.2.1 (x86_64)	Warning	No
Package: nfs-kernel-server-1.3.0-6.9 (x86_64)	Warning	No

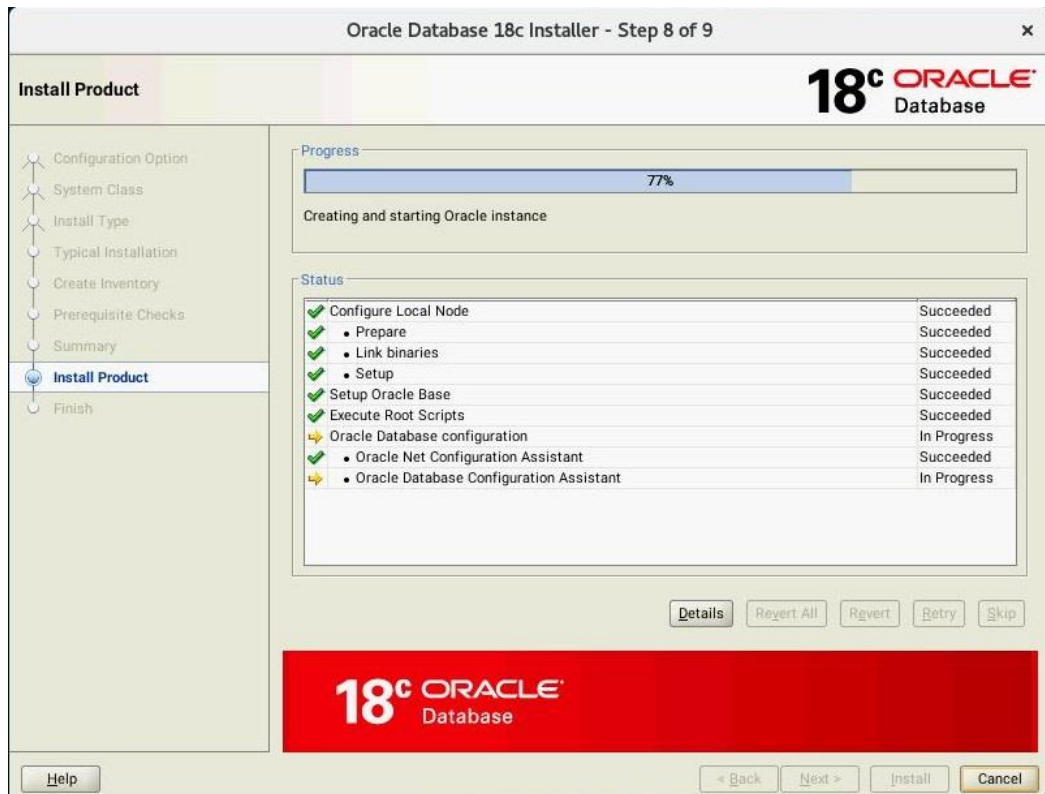
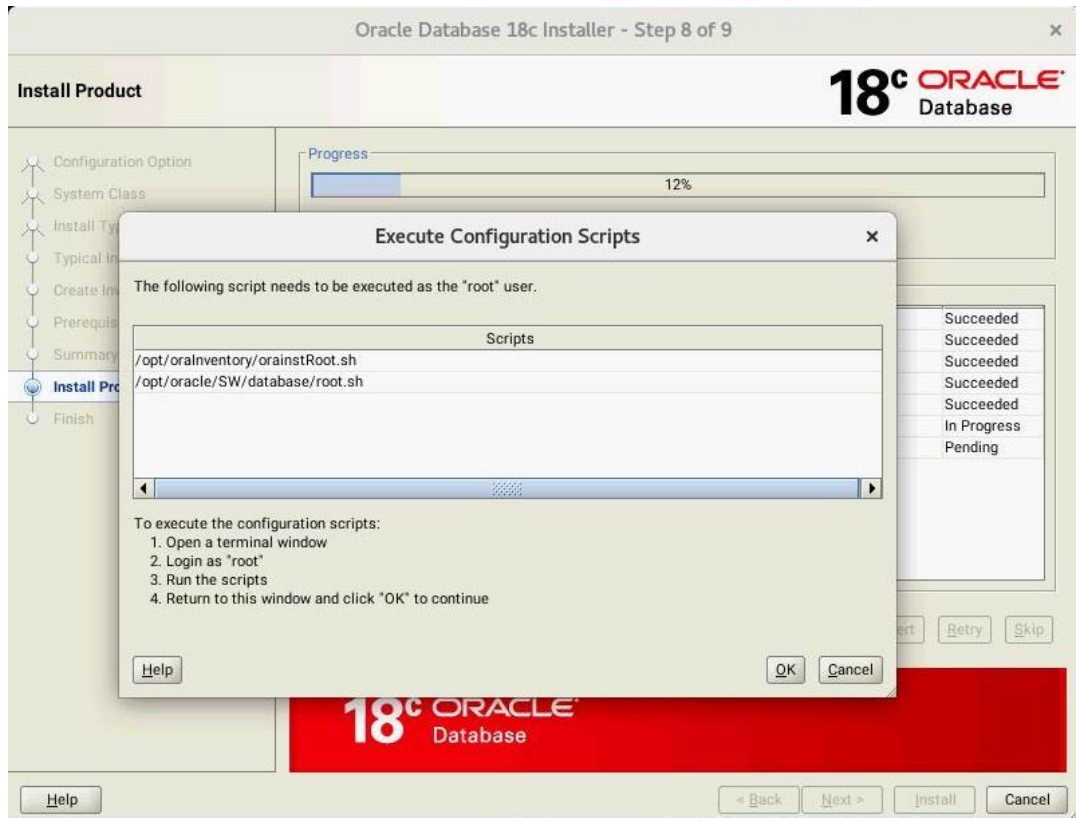
This is a prerequisite condition to test whether the OS kernel parameter "shmall" is properly set. [\(more details\)](#)

Expected Value : 4109793

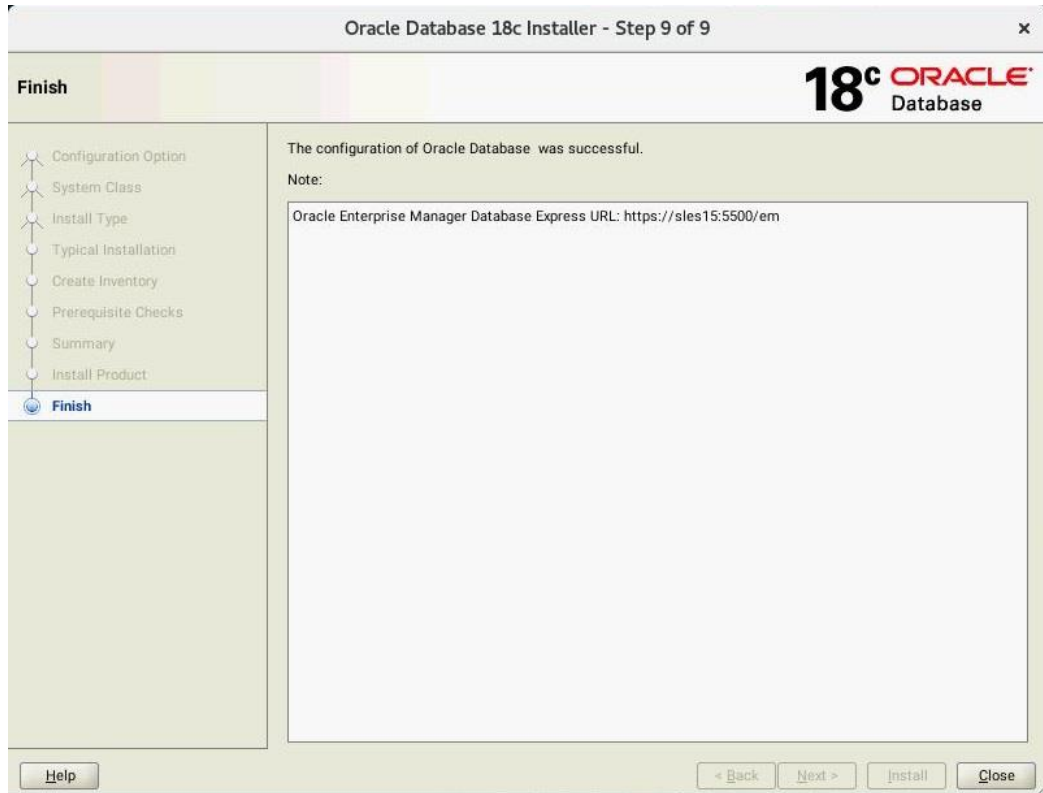
Actual Value : Current=3287834; Configured=undefined











Verify successful Database Installation using sqlplus:

```
oracle@sles15:~/SW/database/bin
File Edit View Search Terminal Help
oracle@sles15:~/SW/database/bin> ./sqlplus / as sysdba

SQL*Plus: Release 18.0.0.0.0 - Production on Thu Jul 26 16:32:25 2018
Version 18.3.0.0.0

Copyright (c) 1982, 2018, Oracle. All rights reserved.

Connected to:
Oracle Database 18c Enterprise Edition Release 18.0.0.0.0 - Production
Version 18.3.0.0.0

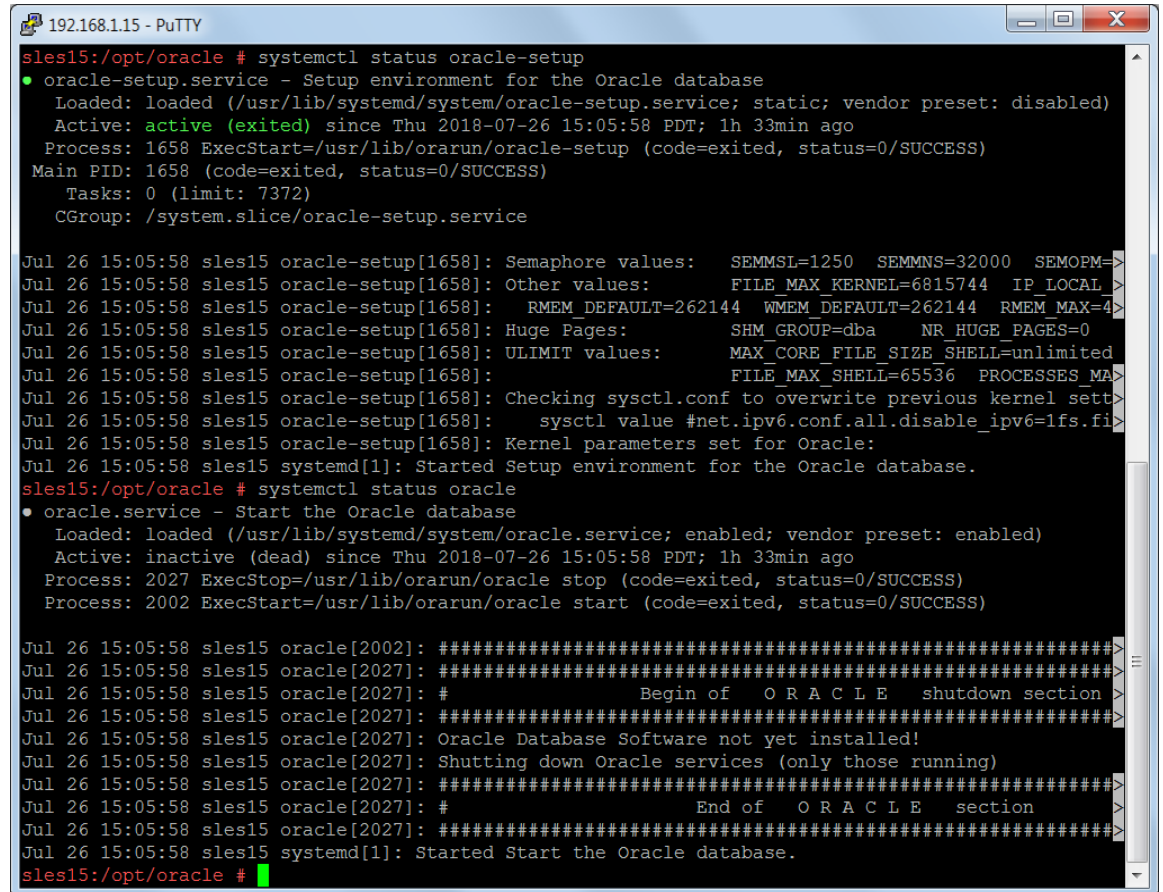
SQL> show sga

Total System Global Area 1.0100E+10 bytes
Fixed Size 12446608 bytes
Variable Size 1677721600 bytes
Database Buffers 8388608000 bytes
Redo Buffers 21106688 bytes
SQL> exit
Disconnected from Oracle Database 18c Enterprise Edition Release 18.0.0.0.0 - Pr
oduction
Version 18.3.0.0.0
oracle@sles15:~/SW/database/bin>
```

## SLES15 System setup (for correct Oracle start after reboot):

Please do following changes for successful Oracle Database start (after reboot):

1. edit “orcl:/opt/oracle/SW/database:Y” in /etc/oractab
2. Set START\_ORACLE\_DB & START\_ORACLE\_DB\_LISTENER to “yes” in /etc/sysconfig/oracle setup file.
3. Check status using **systemctl** commands:



```
192.168.1.15 - PuTTY
sles15:/opt/oracle # systemctl status oracle-setup
● oracle-setup.service - Setup environment for the Oracle database
   Loaded: loaded (/usr/lib/systemd/system/oracle-setup.service; static; vendor preset: disabled)
   Active: active (exited) since Thu 2018-07-26 15:05:58 PDT; 1h 33min ago
   Process: 1658 ExecStart=/usr/lib/orarun/oracle-setup (code=exited, status=0/SUCCESS)
   Main PID: 1658 (code=exited, status=0/SUCCESS)
     Tasks: 0 (limit: 7372)
    CGroup: /system.slice/oracle-setup.service

Jul 26 15:05:58 sles15 oracle-setup[1658]: Semaphore values:  SEMMSL=1250 SEMMNS=32000 SEMOPM=>
Jul 26 15:05:58 sles15 oracle-setup[1658]: Other values:      FILE_MAX_KERNEL=6815744 IP_LOCAL >
Jul 26 15:05:58 sles15 oracle-setup[1658]: RMEM_DEFAULT=262144 WMEM_DEFAULT=262144 RMEM_MAX=4 >
Jul 26 15:05:58 sles15 oracle-setup[1658]: Huge Pages:      SHM_GROUP=dba NR_HUGE_PAGES=0
Jul 26 15:05:58 sles15 oracle-setup[1658]: ULIMIT values:    MAX_CORE_FILE_SIZE_SHELL=unlimited
Jul 26 15:05:58 sles15 oracle-setup[1658]:                  FILE_MAX_SHELL=65536 PROCESSES_MA >
Jul 26 15:05:58 sles15 oracle-setup[1658]: Checking sysctl.conf to overwrite previous kernel sett>
Jul 26 15:05:58 sles15 oracle-setup[1658]: sysctl value #net.ipv6.conf.all.disable_ipv6=1fs.fi>
Jul 26 15:05:58 sles15 oracle-setup[1658]: Kernel parameters set for Oracle:
Jul 26 15:05:58 sles15 systemd[1]: Started Setup environment for the Oracle database.
sles15:/opt/oracle # systemctl status oracle
● oracle.service - Start the Oracle database
   Loaded: loaded (/usr/lib/systemd/system/oracle.service; enabled; vendor preset: enabled)
   Active: inactive (dead) since Thu 2018-07-26 15:05:58 PDT; 1h 33min ago
   Process: 2027 ExecStop=/usr/lib/orarun/oracle stop (code=exited, status=0/SUCCESS)
   Process: 2002 ExecStart=/usr/lib/orarun/oracle start (code=exited, status=0/SUCCESS)

Jul 26 15:05:58 sles15 oracle[2002]: #####
Jul 26 15:05:58 sles15 oracle[2027]: #####
Jul 26 15:05:58 sles15 oracle[2027]: #                               Begin of  O R A C L E  shutdown section >
Jul 26 15:05:58 sles15 oracle[2027]: #####
Jul 26 15:05:58 sles15 oracle[2027]: Oracle Database Software not yet installed!
Jul 26 15:05:58 sles15 oracle[2027]: Shutting down Oracle services (only those running)
Jul 26 15:05:58 sles15 oracle[2027]: #####
Jul 26 15:05:58 sles15 oracle[2027]: #                               End of  O R A C L E  section >
Jul 26 15:05:58 sles15 oracle[2027]: #####
Jul 26 15:05:58 sles15 systemd[1]: Started Start the Oracle database.
sles15:/opt/oracle #
```

# Oracle Enterprise Manager Screen:

The screenshot displays the Oracle Enterprise Manager (EM) Database Home interface for a database instance named 'ORCL'. The page is divided into several sections:

- Status:** Shows the database is up for 4 minutes, a single instance (orcl) on a Linux x86 64-bit platform. The archiver is stopped.
- Performance:** A line chart showing activity classes (Wait, User I/O, CPU) over time. The 'Wait' class shows a significant spike at 4:25 PM.
- Resources:** Four sub-charts:
  - Host CPU:** Shows low CPU usage, mostly from 'Other Instance(s)'.
  - Active Sessions:** Shows a small number of active sessions, primarily 'Wait'.
  - Memory:** Shows memory usage for PGA, Other SGA, Shared I/O Pool, Java Pool, and Large Pool.
  - Data Storage:** Shows data storage usage for ORCLPDB.
- Incidents - Last 24 Hours:** A table showing no incidents.
- SQL Monitor - Last Hour (20 max):** A table showing a single SQL statement executed by SYS@CDB\$ROOT with a duration of 6.0s and a database time of 17.9s.

Thanks for selecting **SUSE Linux Enterprise Server** as your Linux platform of choice!