

Clock Tower Cardboard Model Plans 1

Laurence D. Finston

Created: May 17, 2010

Last updated: June 4, 2010

This document is part of GNU 3DLDF, a package for three-dimensional drawing.

Copyright (C) 2010, 2011, 2012, 2013 The Free Software Foundation

GNU 3DLDF is free software; you can redistribute it and/or modify it under the terms of the GNU General Public License as published by the Free Software Foundation; either version 3 of the License, or (at your option) any later version.

GNU 3DLDF is distributed in the hope that it will be useful, but WITHOUT ANY WARRANTY; without even the implied warranty of MERCHANTABILITY or FITNESS FOR A PARTICULAR PURPOSE. See the GNU General Public License for more details.

You should have received a copy of the GNU General Public License along with GNU 3DLDF; if not, write to the Free Software Foundation, Inc.,
51 Franklin St, Fifth Floor, Boston, MA 02110-1301 USA

See the GNU Free Documentation License for the copying conditions that apply to this document.

You should have received a copy of the GNU Free Documentation License along with GNU 3DLDF; if not, write to the Free Software Foundation, Inc., 51 Franklin St, Fifth Floor, Boston, MA 02110-1301 USA

The mailing list info-3dldf@gnu.org is for sending announcements to users. To subscribe to this mailing list, send an email with “subscribe (email-address)” as the subject.

The webpages for GNU 3DLDF are here: <http://www.gnu.org/software/3dldf/LDF.html>

The author can be contacted at:

Laurence D. Finston
c/o Free Software Foundation, Inc.
51 Franklin St, Fifth Floor
Boston, MA 02110-1301
USA

Email: Laurence.Finston@gmx.de
GNU 3DLDF website: <http://www.gnu.org/software/3dldf/LDF.html>

Instructions

PLEASE NOTE! The author has tried to ensure that the following plans are correct, but as of May 17, 2010, he has not tested them yet himself. As mentioned above, this material is distributed **without a warranty**. I recommend that users check it themselves before investing a lot of time and effort into cutting out the paper model.

Any corrections will be gratefully received by the author. Contact information can be found on the title page.

To use these plans, tape, tack or otherwise attach them to a sheet of heavy paper (I find tacking works best, where possible).

PLEASE NOTE! This version of these plans has tabs that are cut out together with the model (i.e., in one piece) are not suitable for use with cardboard or Bristol board! In this case, the thickness of the cardboard is significant and the parts won't match up properly. Instead, double tabs should be cut out and attached to each of the pieces that are to be connected. I plan to add a version of these plans with double tabs, but have not done so yet (as of 2010.05.17).

The crosshairs on the plans mark places where holes for stitches may be made. The model may then be sewn together or the stitches may be used to align the pieces when gluing.

A cutting knife should be used to cut out the *outer* lines of the plan and score the lines to be folded. Some inner lines, such as the traces of the tabs, are merely for reference and should not be scored.

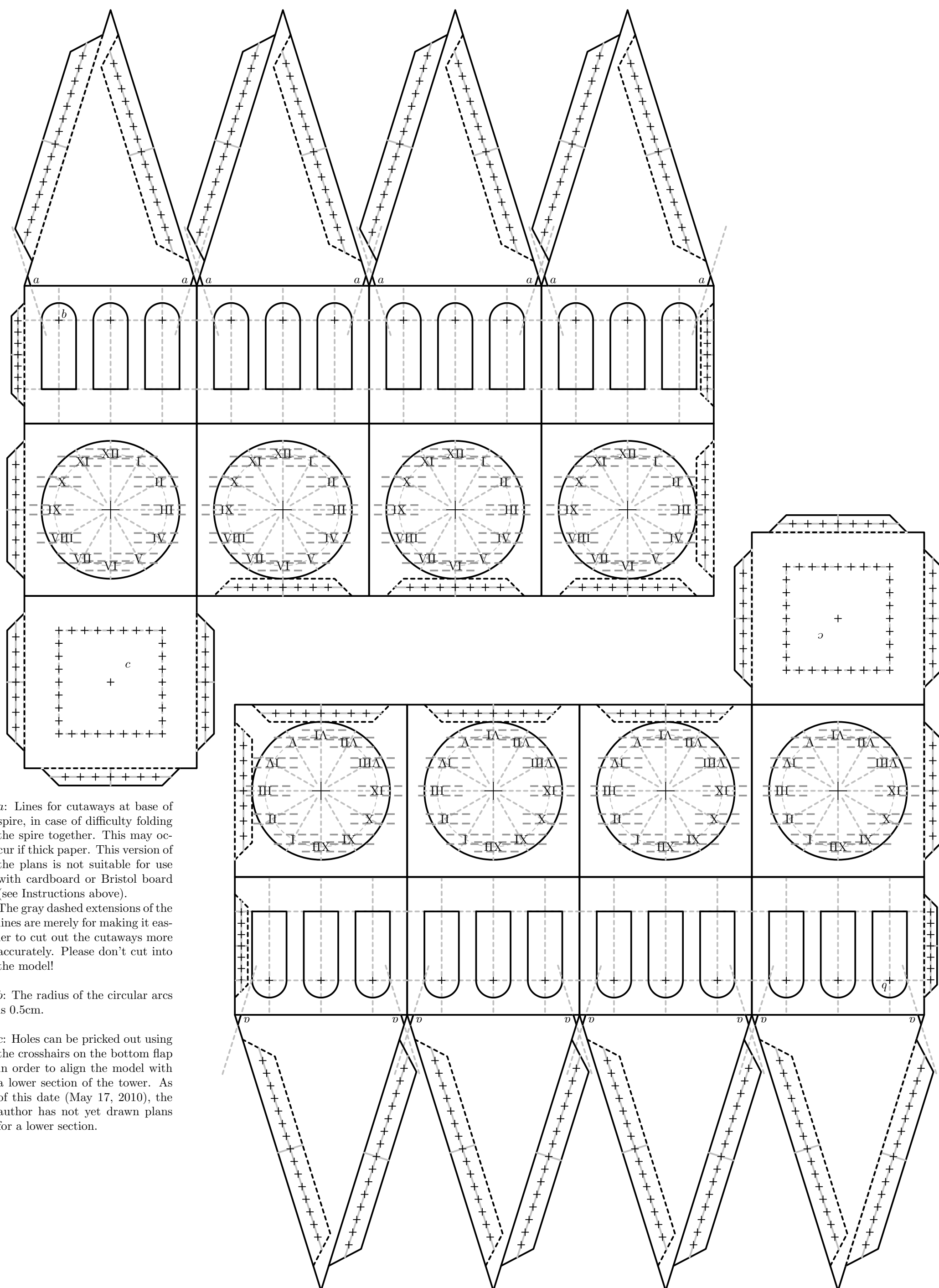
Lines to be cut are drawn in solid black while ones that should be scored or are merely for reference are dashed and/or drawn in gray. Crosshairs that mark where holes should be pricked are drawn in solid black, but with a smaller line width. Here too, I have tried to be consistent about this but cannot guarantee that there are no errors.

The knife must be sharp as heavy paper will dull the blade quickly. I have been using knives with disposable blades. I've been meaning to try sharpening them but haven't done so yet. I therefore can't say whether this will work. It seems a shame to waste so many blades, which is why I have a jar full of them. They must be good for something.

It will be necessary to reattach the plans to the paper as parts are cut out.

Please make sure that the plan is taped down smoothly or you will introduce inaccuracies. *Do not untape it or let it slip until you are done!* You will never get it back where it's supposed to go.

If you use tape, please use a removable kind. Ordinary masking tape will damage the paper when it is removed. Be aware that “removable tape” isn't completely reliable, especially if left too long on the drawing. Sometimes it's possible to reuse pieces of it, which avoids wasting large amounts of it.



a: Lines for cutaways at base of spire, in case of difficulty folding the spire together. This may occur if thick paper. This version of the plans is not suitable for use with cardboard or Bristol board (see Instructions above). The gray dashed extensions of the lines are merely for making it easier to cut out the cutaways more accurately. Please don't cut into the model!

b: The radius of the circular arcs is 0.5cm.

c: Holes can be pricked out using the crosshairs on the bottom flap in order to align the model with a lower section of the tower. As of this date (May 17, 2010), the author has not yet drawn plans for a lower section.