

Building Elements 2

Laurence D. Finston

Created: June 20, 2012

Last updated: June 23, 2012

This document is part of GNU 3DLDF, a package for three-dimensional drawing.

Copyright © 2012, 2013 The Free Software Foundation

GNU 3DLDF is free software; you can redistribute it and/or modify it under the terms of the GNU General Public License as published by the Free Software Foundation; either version 3 of the License, or (at your option) any later version.

GNU 3DLDF is distributed in the hope that it will be useful, but WITHOUT ANY WARRANTY; without even the implied warranty of MERCHANTABILITY or FITNESS FOR A PARTICULAR PURPOSE. See the GNU General Public License for more details.

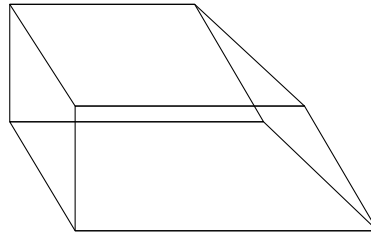
You should have received a copy of the GNU General Public License along with GNU 3DLDF; if not, write to the Free Software Foundation, Inc.,
51 Franklin St, Fifth Floor, Boston, MA 02110-1301 USA

Contents

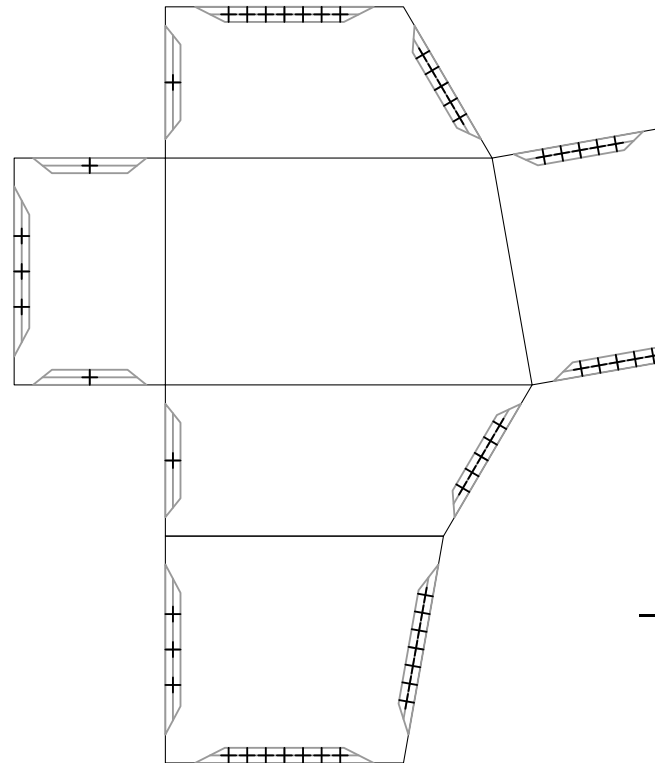
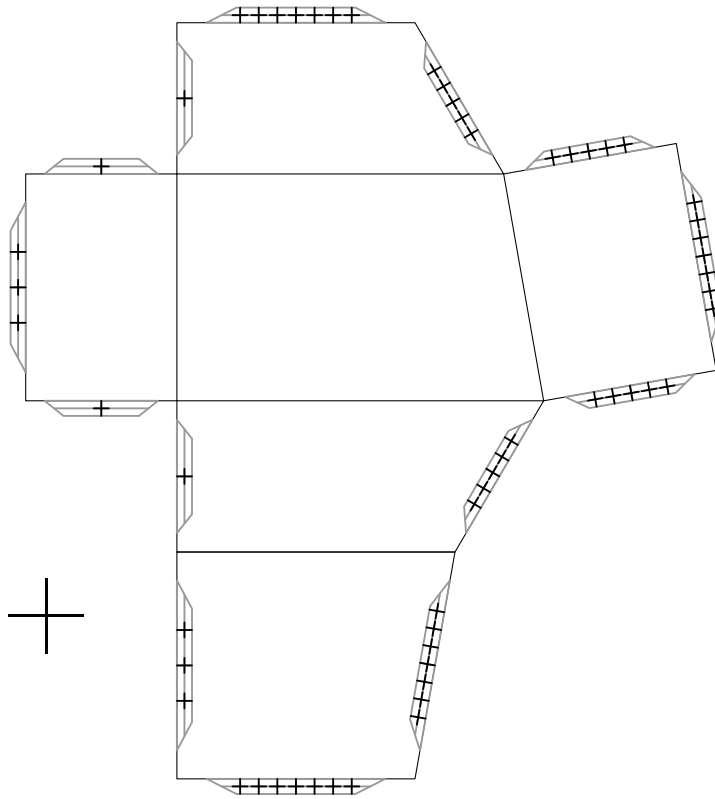
Instructions



Rectangular Prisms with Multiple End Angles



Perspective Projection



Horizontal side length: 4cm
Vertical side length: 3cm
Height: 2cm
Angle α : 30°
Angle β : 10°
Angle γ : 0°
Angle δ : 0°