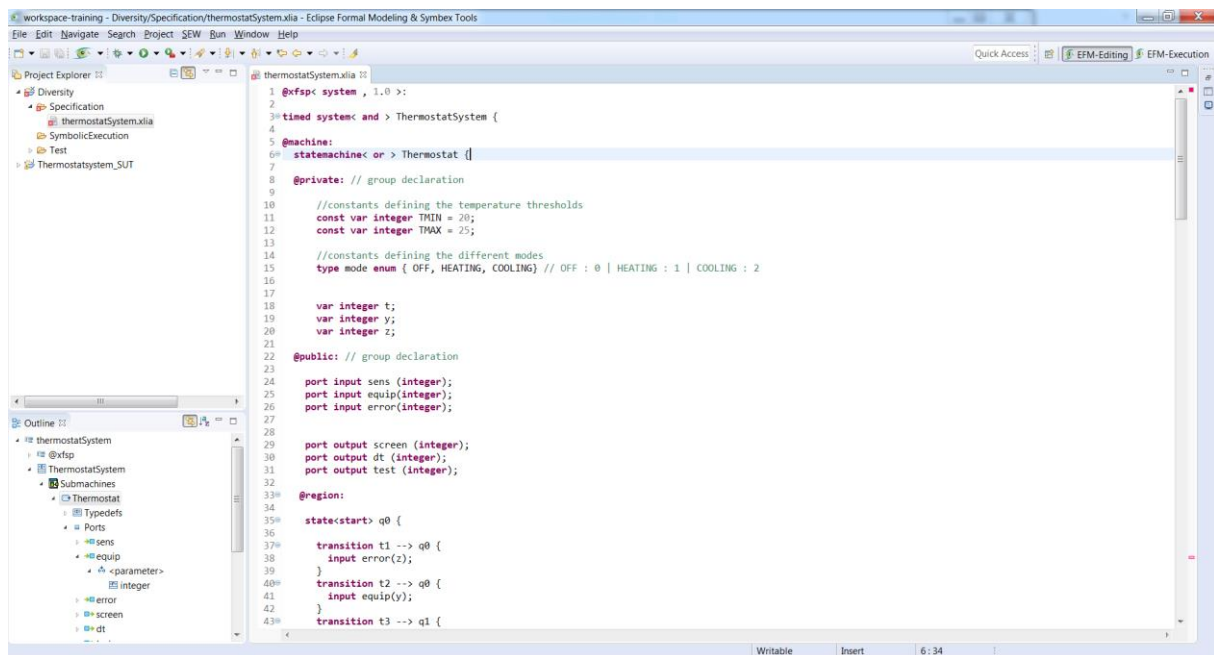


Appendix : Start with tutorial

Installation

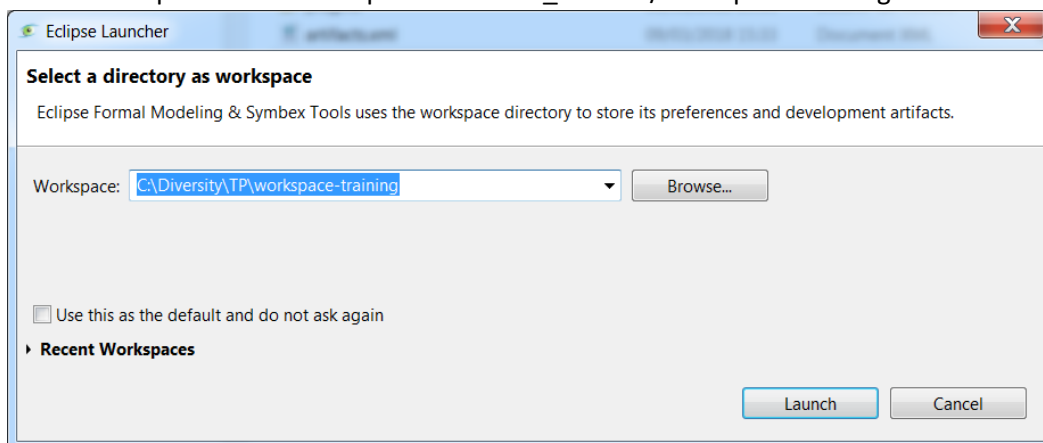
The folder "%install_folder%" (here "C:\Diversity\TP") contains the following tree:

- The executable of the analysis engine « %install_folder% bin/diversity.exe »
- The RCP provides edition facilities xLIA model and configuration files, it can be found in « %install_folder%/efm-textual-rcp » and its launcher in « %install_folder%/efm-textual-rcp/efm-textual.exe »
- (open source) utilities of visualization of the graph in « GV » format in the folder « %install_folder%/tools » and can be downloaded at <http://graphviz.org>

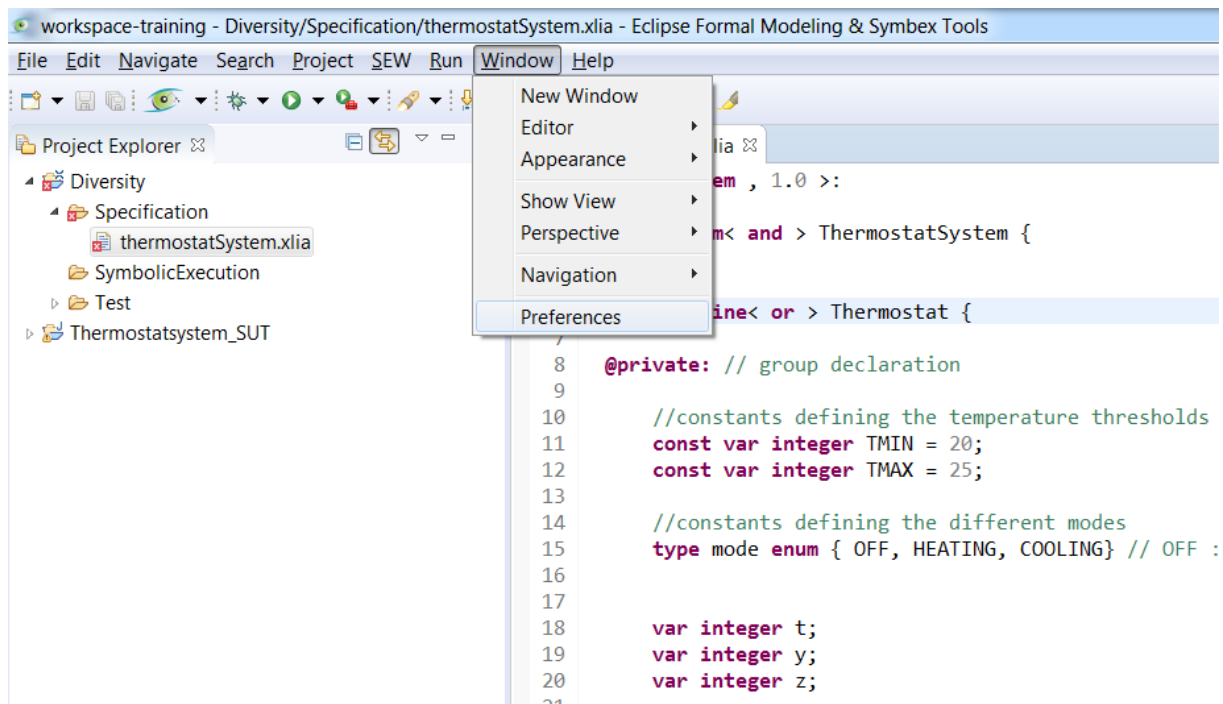


Configuration

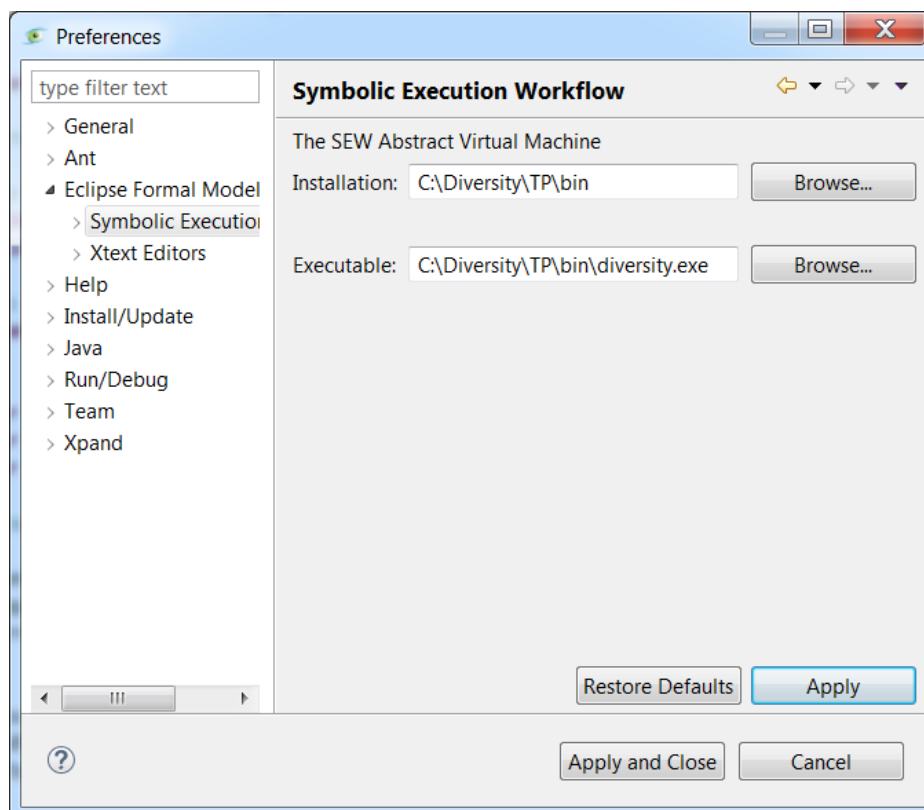
1. Execute the launcher « %install_folder%/efm-textual-rcp/efm-textual.exe »
2. Indicate the path of the workspace « %install_folder%/workspace-training » as follows :



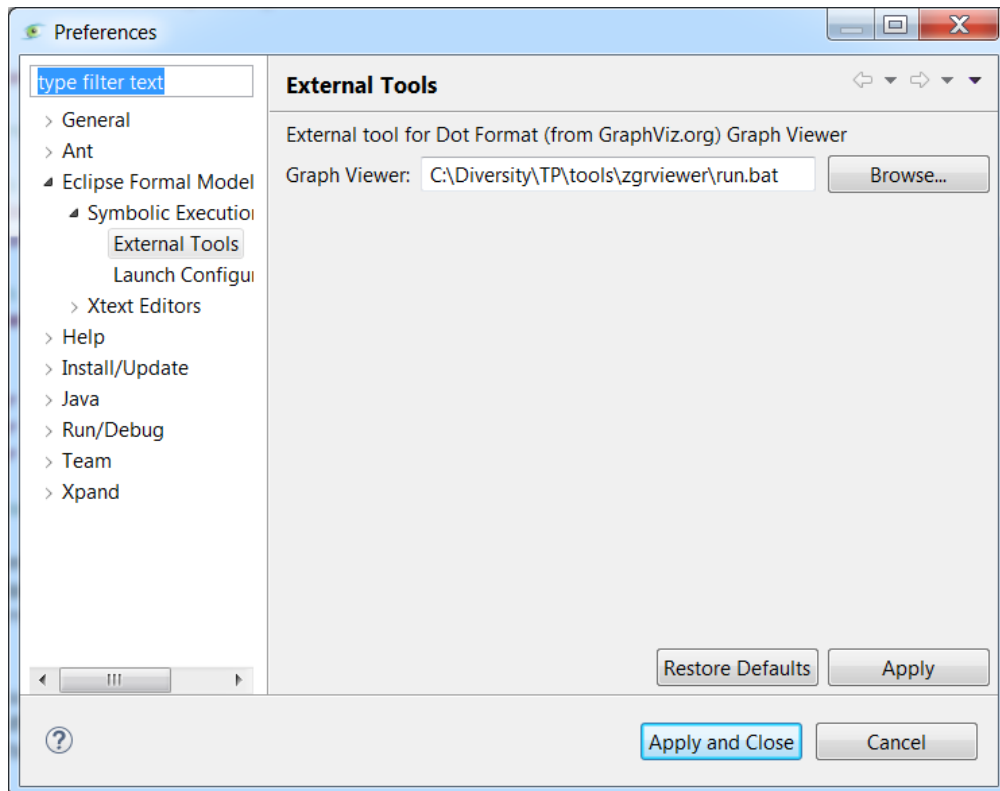
3. Check the configuration of the "Preferences" of the RCP via the menu "Window / Preferences" to indicate the path of executable of the analysis engine



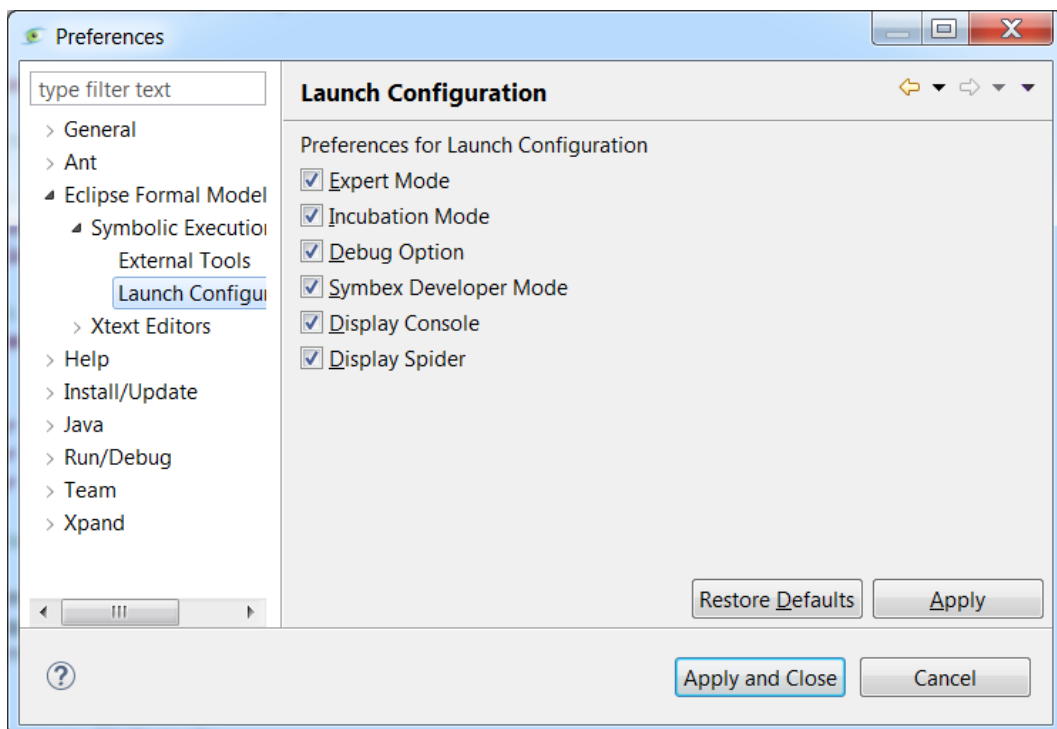
4. Configure « Preferences » of the application « Eclipse/Diversity » via menu
« Window/Preferences » in order to indicate the location of the executable diversity.exe



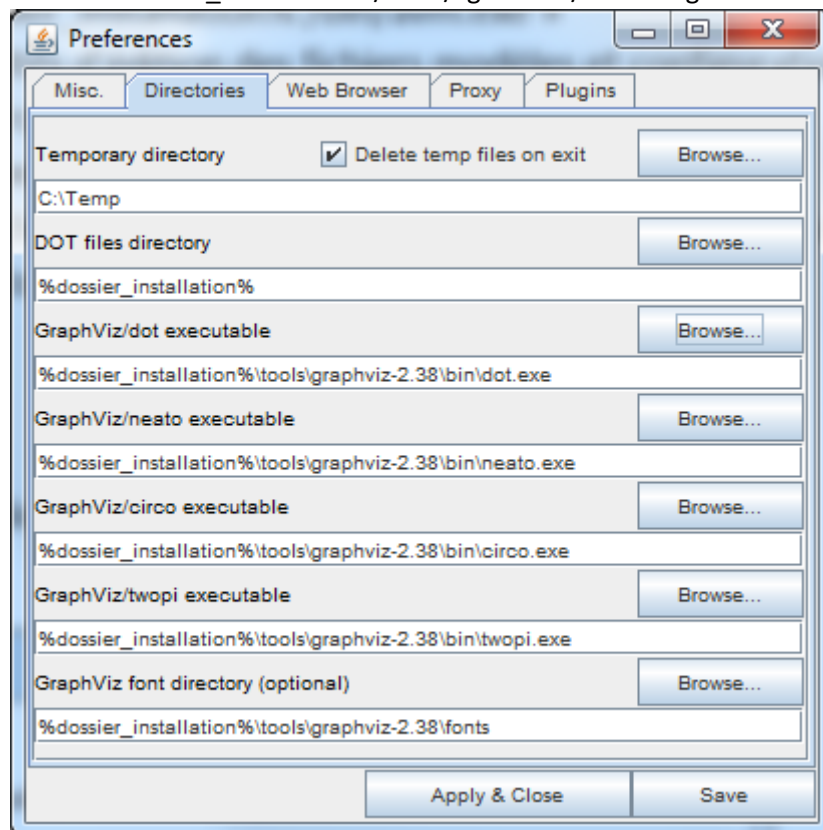
5. Choice of the visualization tool of the graph, here ZGRViewer, in the « GV » format of GraphViz



6. Activate all options of the Launch Configuration



7. Configuration of the visualisation tool of graph, « ZGRViewer » : launch it via
« %dossier_installation%/tools/zgrviewer/ run - orig.bat »



8. The following screenshot shows how to switch from textual editing perspective to the symbolic execution perspective

